

Timber structure detached house with lake views

Mörschwil, CH



Project details

Client	Private
Architecture	FORTIMO AG
Project type	Residential construction single-family home
Construction type	Wood element construction
Services	Timber construction
Construction	2016
Locality	Mörschwil
Country	Switzerland

Detached house with clear design approach and views of Lake Constance

How practical it is when the client and architect are one and the same person and the necessary expertise is on hand! The client and architect contacted Blumer-Lehmann AG for advisory services, a structural study and structural timber engineering at an early stage of the project. The small project team subsequently created the detail and implementation planning for the timber construction in close collaboration with the client. We produced the wall, floor and ceiling elements in wood. We were also instructed to plan, produce and install the staircase from the ground floor to the top floor as well as the facade cladding.

Specific Contact



Marco Gemperle

Sales Residential Construction | Timber
Construction | Switzerland

T +41 71 388 58 55

marco.gemperle@blumer-lehmann.com

Timber structure detached house with lake views

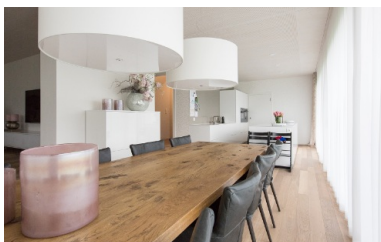
Mörschwil, CH



Clear contours define the building



Stairs constructed in oiled oak



Spacious living area

Large windows for lots of daylight