

Hotel Säntis

Schwägalp, CH



Project details

| | |
|-------------------|------------------------------|
| Client | Säntis-Schwebbahn AG |
| Architecture | Schällibaum AG |
| Project type | Hotels and restaurants |
| Construction type | Wood element construction |
| Services | Timber construction |
| Construction | 2015 |
| Locality | Schwägalp |
| Country | Switzerland |

Sustainability as a top priority

The new hotel replaces the ageing infrastructure at Schwägalp. The new construction and the resulting integration into the natural environment has changed the appearance of Schwägalp for the better. Once overshadowed by the traditional, massive mountain inn, the terrain is now a gentle Alpine landscape. The hotel is a hybrid construction comprising reinforced concrete and timber. The outer walls consist of shell elements with pre-installed windows, which were clad with a larch facade. The massive timber construction elements were transported to Schwägalp on flatbed lorries. The large roof beams and elements were placed directly on the shell and installed by us. The first floor and the three hotel room floors above that have a wooden facade, in which the Appenzell-style decorative elements are integrated. The working conditions were not always easy due to the heavy rain, but that did not stop our team.

Specific Contact



Richard Jussel

Project Development | Sales – Industrial
Buildings | Timber and Modular
Construction | Switzerland

T +41 71 388 58 61

richard.jussel@blumer-lehmann.com

Hotel Säntis

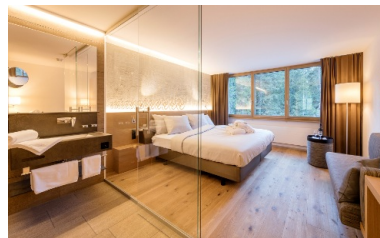
Schwägalp, CH



Harmoniously integrated into the Alpine landscape



Pre-weathered larch facade



Interior design with a regional accent

High-spec guest rooms