

Organic bakery

Lanterswil, CH



Organic bakery

Lanterswil, CH



Project details

Client	Lehmann Holzofenbeck AG
Architecture	Blumer-Lehmann AG
Project type	Commercial and industrial
Construction type	Wood element construction
Services	General contractor services (GC)
Own products	Fassaden
Construction	2018
Locality	Lanterswil
Country	Switzerland

info@blumer-lehmann.com
blumer-lehmann.com

The fascinating world of wood

New replacement building for production and sales

Having enjoyed strong growth for a number of years and with space becoming increasingly scarce, Bio-Beck Lehmann needed to expand its premises. We were involved with the construction project from the outset, with our in-house architect creating an initial design based on the client's ideas. We were subsequently responsible for detail planning, the tendering of all trades, the awarding of contracts to subcontractors, site management and delivery of the entire building. The result is a replacement new building with a concrete basement level and three additional storeys constructed from timber. The ground floor of the new building houses production, packing and the retail unit. Offices, comfortable washing facilities with cloakrooms for staff and a spacious staffroom with a kitchen are located upstairs. A stylish wooden staircase offers direct access from the idyllic organic garden to the upper floors. Production was moved into the finished building at the end of October 2018.

Specific Contact



Migga Hug

Head of GC & TC Services | Architectural
planning | Switzerland
Member of the Division Management

T +41 71 388 58 23

migga.hug@blumer-lehmann.com

Organic bakery

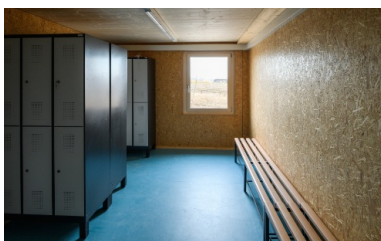
Lanterswil, CH



Spruce roof truss



Generous office space



Backstage wing

info@blumer-lehmann.com
blumer-lehmann.com

The fascinating world of wood