

Soothing hospital design in timber construction

Münsterlingen, CH



Soothing hospital design in timber construction

Münsterlingen, CH



Project details

Client	Spital Thurgau AG
Architecture	Scheitlin Syfrig Architekten
Project type	Healthcare and care facilities
Construction type	Wood element construction
Services	Timber construction
Construction	2022
Locality	Münsterlingen
Country	Switzerland

Soothing hospital design in timber construction

Münsterlingen, CH



Care ward with flexible use of space

A soothing atmosphere and flexibility characterise the new 'Haus T' building on the Münsterlingen hospital site. As an exclusive partner for timber construction, Blumer Lehmann already contributed plenty of expertise early on in the planning process and carried out the timber construction on behalf of full-service contractor Frutiger AG.

The exterior as well as the interior of the new three-storey 'Haus T' building sets itself apart from conventional hospital buildings. The exposed timber structure inside the building creates a comforting living environment and raises the quality of the indoor climate, in turn supporting recovery. On the exterior, the timber facade has diamond-shaped ornamentation to give the building a homely and welcoming feel.

The three timber storeys are set on top of a semi-basement floor in solid construction at ground level. The different floors are accessed via two solid stairwells. The new 'Haus T' contains three psychiatric therapy units, each with 20 beds in single and twin rooms, offices, consultation rooms, living spaces, lounges and dining rooms. A specific requirement of the competition was a feature to allow flexible use of the rooms by different specialist treatments – without needing to convert the space.

A timber construction design was stipulated from the beginning in the competition tender. It picks up on the traditional Thurgau construction style and creates the foundation for a contemporary and sustainable new building whose construction and operation makes the smallest possible environment impact.

Specific Contact



Markus Rutz

Division Manager Timber and Modular
Construction | CH
Member of the Executive Board

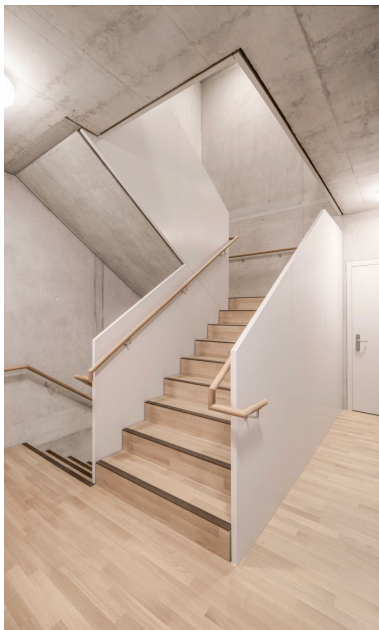
T +41 71 388 58 40
markus.rutz@blumer-lehmann.com

Soothing hospital design in timber construction

Münsterlingen, CH



The "House T" in Münsterlingen offers a nursing ward with flexible use of space, characterised by a feel-good atmosphere and versatile application options.



The timber construction of "House T" was not only specified by the competition, but also forms the basis for a modern, sustainable new building in harmony with the traditional construction methods of Thurgau.

Soothing hospital design in timber construction



Münsterlingen, CH



The wooden façade with diamond-shaped ornaments gives "House T" a cosy and friendly appearance that deliberately sets it apart from conventional hospital buildings.

The competition explicitly called for the possibility of flexible use of the rooms by other specialist areas without the need for costly conversions.



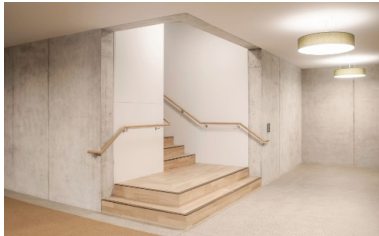
The visible timber construction inside the new three-storey building not only creates a cosy living atmosphere, but also supports the indoor climate for optimum recovery.

Soothing hospital design in timber construction

Münsterlingen, CH



"House T" is home to three psychiatric therapy wards, each with 20 beds in single and double rooms.



The three storeys of the new building are constructed in timber on a solid base storey on the ground floor.